

LAVOR

SIMPLY STRONGER

Walk Behind Compact Floor Scrubber Dryer

ماكينات غسل وتلميع وتجفيف أرضيات

LAVOR

SIMPLY STRONGER

DYNAMIC 45E 8.580.0001

100%

MADE IN ITALY



Technical Specifications

- 1) Voltage: 230V.
- 2) Brush motor power / Vacuum motor: 300 W / 700 W.
- 3) Brush width / Squeegee width: 450 mm / 540 mm.
- 4) Max Working capacity: 1600 m2/h.
- 5) Detergent tank capacity: 30 l.
- 6) Recovery tank capacity: 32 - 35 l.
- 7) Traction: Mechanical.
- 8) Detergent solution system: Solenoid Valve.
- 9) RPM / Pressure on the brush: 145 / 32 kg.
- 10) Dimensions / Weight: 117x58x78 cm / 66 kg.

المواصفات الفنية

- (١) تيار التشغيل: ٢٣٠ فولت.
- (٢) قدرة موتور الفرشاة / موتور الشفط: ٣٠٠ واط / ٧٠٠ واط.
- (٣) عرض الفرشاة / عرض الممسحة: ٤٥٠ مم / ٥٤٠ مم.
- (٤) مساحة العمل: ١٦٠٠ م٢/س.
- (٥) سعة تانك الإضافات: ٣٠ لتر.
- (٦) سعة تانك العائد: من ٣٢ إلى ٣٥ لتر.
- (٧) الجر / نظام سوائل التنظيف: ميكانيكي / Solenoid Valve.
- (٨) سرعة الدوران / قوة الضغط على الفرشاة: ١٤٥ لفة/دقيقة / ٣٢ كجم.
- (٩) الأبعاد / الوزن: ١١٧ × ٥٨ × ٧٨ سم / ٦٦ كجم.

Main Features

- 1) Ideal for small and medium floors up to 1600sqm, especially when congested by people or furnishing like in gyms, car showrooms, hospitals and schools.
- 2) Narrow body with both side brush protrusion and 300° squeegee spin.
- 3) Tool less removable recovery tank with large visual inspection window and stretchable discharge hose.
- 4) Large non making working wheels and sturdy rear roller for displacements.

مميزات الماكينة

- (١) الماكينة مناسبة جداً للأرضيات الصغيرة والمتوسطة تصل إلى ١٦٠٠ متر مربع، خاصة الأماكن المزدحمة كالمستشفيات والمدارس والصالات الرياضية ومعارض السيارات.
- (٢) جسم الماكينة صغير مع فرشاة جانبية بارزة وممسحة تدور ٣٠٠ درجة.
- (٣) يتم إزالة تانك العائد بسهولة بدون استخدام أي أدوات مع نافذة كبيرة للفحص وخرطوم تفريغ مطاطي.
- (٤) الماكينة محملة على عجلات كبيرة لا تقوم بترك علامات على الأرضية.

Dynamic



LEVEL



CHARGER



1



STOP



NEW



LI-ION BATTERY

Model: Dynamic 45B Li

STANDARD EQUIPMENT



• 5.511.2228
PP brush Ø 430 mm - 17"



• 4.508.1319 Front squeegee blade Shore 40 Th. 2,5 mm
• 4.508.1320 Rear squeegee blade Shore 40 Th. 3,0 mm



• 0.108.0073
On-board Battery charger 24V 10A
(only for model code: 8.580.0002/8.580.0003)



• 0.108.0089 On-board Battery charger 29,4V 12A 110-230V 50/60Hz
only for model code: 8.580.0037



• 2 x 0.107.0061
Maintenance free battery 12V MFP 50 65Ah C20/50Ah C-5
only for model code: 8.580.0003



• 1 x 0.107.0091
Li-ion battery 24V 30 Ah 700Wh
only for model code: 8.580.0037

Equipped with:

- Ideal for small and medium floors up to 1600sqm, especially when congested by people or furnishing like in wellness centres, gyms, car showroom, retail shops, hospitals and schools.
- **Li-ion battery 24V (45B Li)**
- Automatic brush attachment, discharge and delayed cut-off.
- Adjustable solution release with automatic cut-off.
- Narrow body with both side brush protrusion and 300° squeegee spin.
- Tool less removable recovery tank with large visual inspection window and stretchable discharge hose.
- Adjustable driving handle with dead man switches, soft touch controls and diagnosis (Eco Energy mode and battery low level automatic cut-off for DC version).
- Large non marking working wheels and sturdy rear roller for displacements.

*** New, standard on machines starting from 2022, compatible with all previous machine models**

	Dynamic 45E	Dynamic 45B	Dynamic 45B	Dynamic 45B Li
code	8.580.0001	8.580.0002	8.580.0003	8.580.0037
power supply	230V-50Hz	24V (battery charger included)	24V (batteries and charger included)	24V (battery and charger included)
scrubbing/squeegee width	450/540 mm	450/540 mm	450/540 mm	450/540 mm
max working capacity	1600 m²/h	1600 m²/h	1600 m²/h	1600 m²/h
solution tank capacity	30 l/7.92 gal	30 l/7.92 gal	30 l/7.92 gal	30 l/7.92 gal
recovery tank capacity	32-35 l/8.45 - 9.24 gal	32-35 l/8.45 - 9.24 gal	32-35 l/8.45 - 9.24 gal	32-35 l/8.45 - 9.24 gal
traction	mechanical	mechanical	mechanical	mechanical
RPM/pressure on the brush	145/32 kg/70,5 lbs	145/32 kg/70,5 lbs	145/32 kg/70,5 lbs	150/31 kg/68 lbs
brush motor power	300 W	400 W	400 W	400 W
detergent solution system	solenoid valve	solenoid valve	solenoid valve	solenoid valve
depression/vacuum motor	1200 mmH ₂ O/700 W	1200 mmH ₂ O/400 W	1200 mmH ₂ O/400 W	1200 mmH ₂ O/400 W
dimensions/weight	117x58x78 cm/66 kg	117x58x78 cm/53 kg	117x58x78 cm/94 kg	117x58x78 cm/77,5 kg

OPTIONAL


On/off switch protecting unintentional use.
 Protection against overloads, battery discharge abuse (DC only) and undesired run.
 Convenient one switch maintenance over the brush.
 Eco Energy setting for extensive working time and extremely quiet operations (DC only).

Accessible on-board charger (DC only, when provided), far away from sprays.
 Time saving convenient foot operating squeegee lift.
 Handle can be easily adjusted to fit comfort of operators even in narrow spaces.



Easy access and handling to clean recovery tank and floater.
 Less downtimes due to simple maintenance and construction
 Great visibility and cleaning capability on hard to reach edges on both sides of the brush.



Extensive squeegee spin for easy blade replacement and perfect suction even on corners
 Easy setting and automatic solution release to save chemical and fit different floor conditions.
 High stability and capability to overtake small steps.



- 2 x 0.107.0050 Battery AGM 12V 55Ah only for model code: 8.580.0003



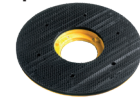
- 4.508.1324 Polyurethane front blade L.665
- 4.508.1325 Polyurethane rear blade L.775

*



- 5.511.2229 Tynex brush Ø 430 mm-17"
- 5.511.2230 PP 0,3 brush Ø 430 mm-17"
- 5.511.2231 PES brush Ø 430 mm - 17"

*



- 5.511.2232 EWU pad driver Ø 430 mm-17"



- 6.508.0032 Abrasive pad Ø 430 mm-17" - beige (5 pcs.)
- 6.508.0039 Abrasive pad Ø 430 mm-17" - green (5 pcs.)
- 6.508.0046 Abrasive pad Ø 430 mm-17" - black (5 pcs.)



- 4.512.0068 Extension electric cord 15 m with Schuko plug